

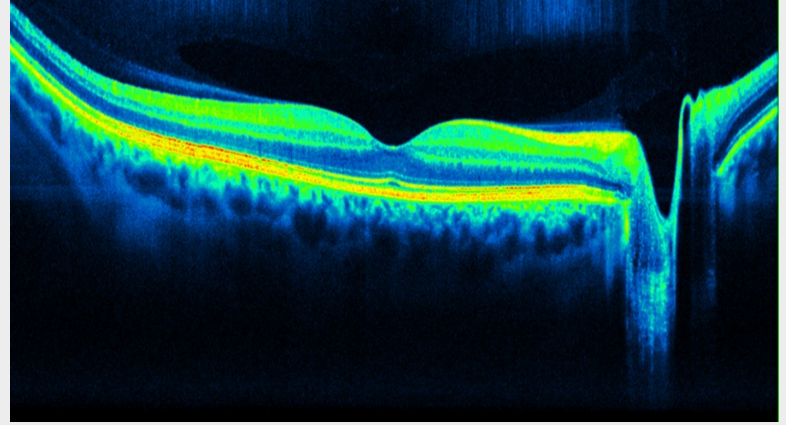
Focus on OCT.

The Changing role of the Eyecare Professional



Association of British Dispensing Opticians

So what is **Focus on** **OCT?**



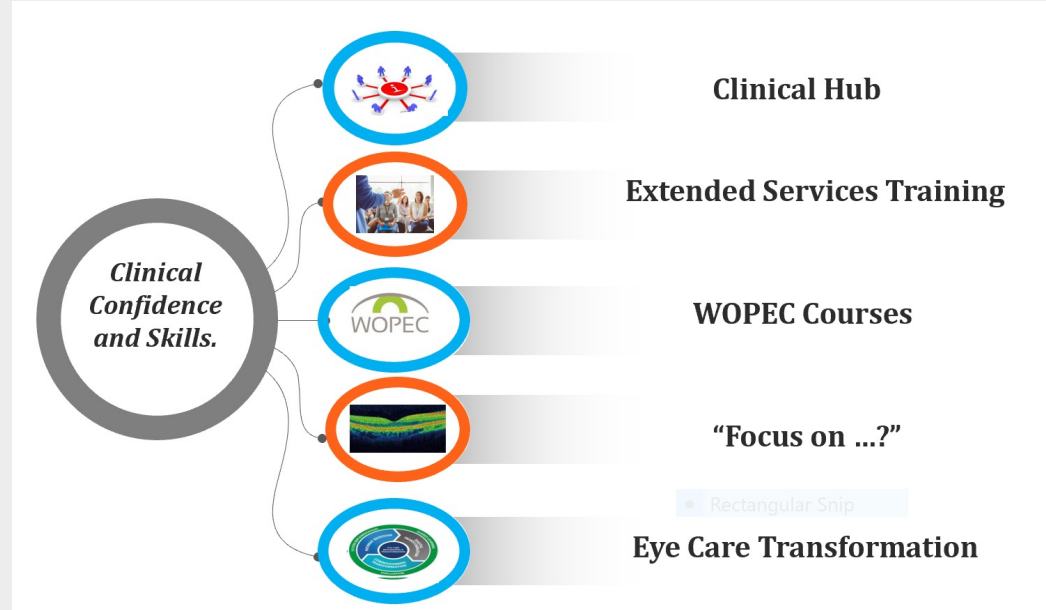
Association of British Dispensing Opticians



“Focus On..” is about

“Clinical techniques and knowledge that enhances a DOs/ECP clinical role within practice”

Clinical Confidence and Skills



**Myopia
management**



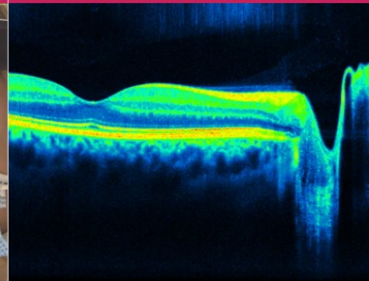
Eye disease



Extended services



Focus on ... OCT



Clinical Hub

Four sections to date

Association of British Dispensing Opticians

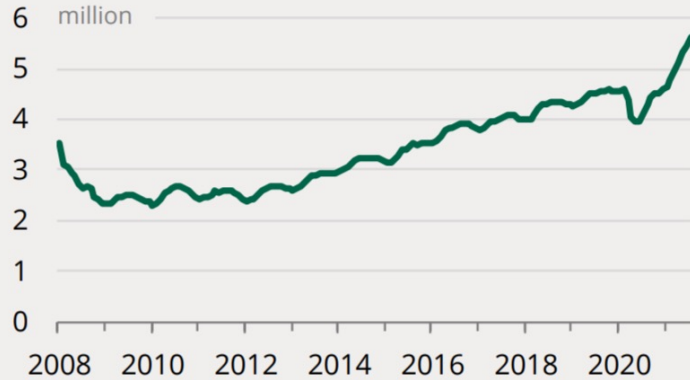


So why OCT?

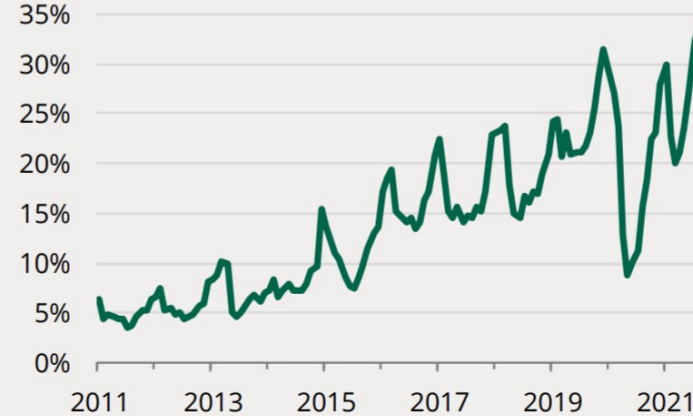
- Becoming more common in practice.
- Move towards enhanced referrals/referral refinement.
- Clinical hub/data gathering models offer opportunities outside of “traditional” High St practice.
- Training provided “in store” on OCT can be limited
- We want the opportunity to highlight the “Clinical Skills” of primary care practitioners to patients.
- ABDO practitioner survey

Why do we think our roles may begin to change?

Waiting list for hospital treatment



Patients spending over 4 hours in major A&E



Are
Future

My Dashboard

Eye Care h.

1.Register
professional
care 211021 v2.0



1.Registered Eyecare Professionals multi-profes

NHS

Primary Care Optometry Competencies and Qualifications for delivery of Primary Care Eye Care Services

Notifications Tasks MH Account

Category	Pathway	Core Competency	CPD	Experience	WOP/EC	Local	Level 1	OPT Level 1	Level 2	Level 3	Prof	College Higher Quals	Higher	Diploma	Other
Cataract	Pre-operative Post-operative Pre-operative - direct to list *An IP qualification may support the independent prescribing decision for post-op cataract management														
Glaucoma	Regist measures Enhanced case finding Monitoring & management - consultant supervision (Grade G1-3**) Management - low risk against management plan, autonomous within remit of management plan Referral referral Management - OHT or stable CDMO independent* (Grade G1-3**) *An IP qualification may support the independent prescribing decision for glaucoma management alongside a higher or Diploma in Glaucoma **Grade is based on Glaucoma Staff and Risk Stratification tool (owned by Professor Peter Shah at the Birmingham Institute for Glaucoma Research)														
Medical Retina	Referral filtering (AMD / DMO) with AMD / retinal service Monitoring (AMD) - against management plan, autonomous within remit of management plan Monitoring (HICQ)* with AMD / retinal service DES (screening and grading)** *OCISU are in discussions re "add on" module for the HICQ monitoring pathway. **DES Diploma for Health Screeners is required for all providers of DES, the College Prof Cert provides approval of prior learning towards the Diploma														
Urgent	Pathway MELCS* CUES* CUES* (EP) *Main primary care urgent eye care services now include superficial foreign body removal. WOP/EC have a specific "add on" module														

ed?

Association of British Dispensing Opticians



Optometry First! – Brilliant idea, not 100% about the name!

Association of British Dispensing Opticians



So for today:

- Enjoy your time out of practice
- Think about how what you are learning fits into your future plans.
- Consider it just the start of a journey to build clinical skills and knowledge for the benefit of your patients.



Thanks go to all our collaborators.

Association of British Dispensing Opticians



Thank you for your time

For more information visit our website www.abdo.org.uk

Max Halford
Clinical Lead.



abdo

Association of British Dispensing Opticians



abdo

Association of British Dispensing Opticians