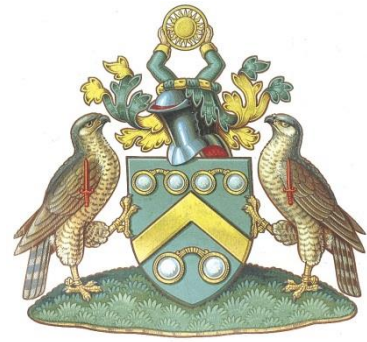


Worshipful Company of Spectacle Makers



Certificate in Optical Care at SCQF Level 7

Unit 4 – Low Vision Aids in Optical Practice

Duration: 1.5 hours

Candidate Number:

Date:

Answer **ALL** questions.

Number of Supplementary Sheets used (if any), including graph paper.

For office use only

	Unit 4			Total	
Question number	1	2	3	Marks	%
Marks					
Moderated					

Examiner's signature

Moderator's signature

This booklet is the property of the WCSM and **must not be removed** by the candidate from the examination room.

This page
has been
left blank.

Question 1

a) State the definition of the term "**Visual Impairment**". **(4 marks)**

b) Explain the term "**Visual Acuity**". **(2 marks)**

c) Complete the following statement. - **(3 marks)**

We can improve the quality of vision for our patients by making things,

1. _____, 2. _____, and 3. _____.

d) Explain the term "**Low Vision aid**". **(1 mark)**

Question 1

- e)** Give an example of an **optical** LVA. Give one example of what it could be used for? **(2 marks)**

- f)** Give an example of a **non-optical** LVA. How would it help our patient? **(2 marks)**

- g)** Suggest **two** other agencies, other than optical professionals, that may give support and assistance to low vision patients. Describe what support they give. **(3 marks)**

- h)** Sally has **VA R6/60 L6/24**, with severely restricted visual fields. Would she be registered SSI, SI or not registered? **(1 mark)**

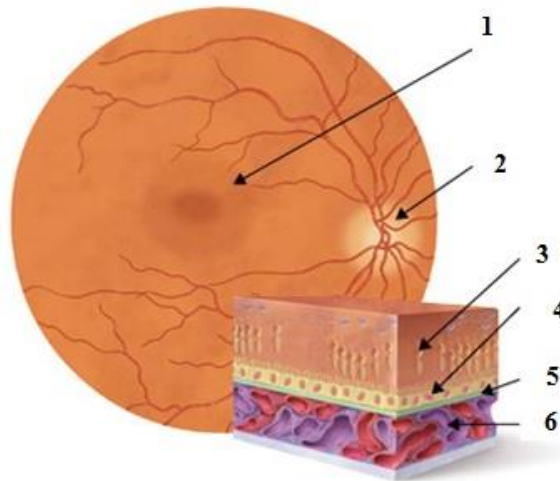
Question 1

i) Peter has **VA R3/60, L HM**. Would he be registered SSI, SI or not registered?
(1 mark)

j) Mary has **VA R6/24, L 6/12**. Would she be registered SSI, SI or not registered?
(1 mark)

Question 2

a)



Name the **six** structures in the diagram. **(6 marks)**

b) Suggest **TWO** actions your patient could take to help to slow the progression of **Dry ARMD**. **(2 marks)**

Question 2

c) State **ONE** visual symptom that may be caused by **EARLY** Dry AMD? **(1 mark)**

d) What type of vision loss is experienced by a patient with **ADVANCED** AMD? **(1 mark)**

e) State **ONE** task that is particularly difficult for ARMD sufferers. **(1 mark)**

f) What LVA would you suggest to help with the task you named in **e)**? **(2 marks)**

g) Explain how you would calculate the magnification required for your chosen LVA. **(3 marks)**

Question 2

h) Describe how you would instruct your patient to use your chosen LVA.

(4 marks)

Question 3

a) A Patient attends for his **FIRST** Low Vision Assessment. List **SIX** functions that would be routinely performed at this appointment.

(6 marks)

b) Two months later, our patient returns for a Follow-up Low vision appointment. What may be discussed at this appointment?

(2 marks)

Question 3

Examiner's
use only

c) Albert is 90 years old and suffers from Parkinson's Disease. Discuss what problems his condition may cause when using LVAs. **(2 marks)**

d) Discuss how you could solve the problems posed in **b)**? **(3 marks)**

DO NOT TURN THIS PAPER OVER UNTIL ADVISED TO DO SO BY THE INVIGILATOR

Important Instructions for Candidates

Please read carefully and follow these instructions when told to do so by the Examiner/Invigilator.

1. Before you start to answer any question, take a few minutes to read through the paper.
2. Please ensure your candidate number and date are in the boxes on the front cover of this booklet.
3. Please **DO NOT** write your name on this booklet. Candidates must remain anonymous for marking purposes.
4. Write your answers as clearly as you can, using a black/blue pen only. Do not use a pencil. If the examiner cannot read your writing or figures you may lose marks, or even receive no marks at all. **Pencils may only be used for graphs and diagrams.**
5. You should read each question carefully and make sure that you know what you have to do before you start to answer.
6. You must write your answers in the space provided. Additional paper may be used if necessary, but you must show your candidate number and the question number at the top of each sheet; not your name. You must also annotate the box on the front cover of this booklet to show how many extra sheets you used.
7. Please do not write in the margins.
8. Make sure your diagrams are as clear and neat as possible; you will get marks for doing so. If you need to draw a graph use as large a scale as practicable; this will give the most accurate answer.
9. When answering mathematical questions, write **ALL YOUR CALCULATIONS IN FULL**. Even if you get the final answer wrong, you may get credit for the parts of the calculation that are correct.
10. After you have completed each answer, re-read the question to make sure you have answered it fully.
11. Try to leave yourself enough time to check the completed paper through once more, before handing it in.
12. Do not tear out any part of this booklet. All work must be handed in.
13. Before handing your paper in, ensure your Candidate number is entered clearly on the front of this booklet and on any extra sheets you may have used.
14. Attach any sheets to this booklet and annotate how many there are in the box on the front of this booklet.

When told to do so by the Invigilator, you may turn the paper over and begin.